



Idaho State University

# CEWT

CONTINUING EDUCATION AND WORKFORCE TRAINING



## Idaho Launch Funding

ISU offers a variety of courses approved through Idaho Launch.

SEE PAGES 2-3

To Enroll in Classes: Visit [cetrain.isu.edu](https://cetrain.isu.edu) or call (208) 282-3372

S U M M E R 2 0 2 4

## Welcome to our Summer Catalog!

When I think about summer, my mind automatically shifts to visions of relaxation and enjoying the sunshine, swimming, camping, celebrations, and connecting with family. But summer isn't just a season to relax—it's a time to grow and try new things. At ISU CEWT, we understand the importance of making the most of every moment—especially during the relaxed days of summer. Whether you are seeking to sharpen your professional skills, indulge in a newfound passion, or simply create unforgettable memories with loved ones, our array of summer camps and courses offers something for everyone.

Summer is the perfect time to invest in yourself- we look forward to welcoming you to our summer programs!

-RaeLyn, CEWT Interim Director

## Mark Your Calendar

Mark your calendar and **save these dates** for the following:

- **Safety Fest of the Great Northwest—May 7-9, 2024**
- **Ignite Their Future-June 2024**
- **ISU Apprenticeship Programs—Registration Opens July 1**

For more information about our events, conferences, and classes visit our website: [cetrain.isu.edu](http://cetrain.isu.edu)

### LIKE and FOLLOW US ONLINE:

**Facebook:** @isucetrain

**YouTube:** @ISUCEWT

**Instagram:**@isucewt

**Twitter:** @ISU\_WFT

**Blog:** [blog.cetrain.isu.edu/blog](http://blog.cetrain.isu.edu/blog)

**CEWT Talk Podcast:** [soundcloud.com/cewt-talk](http://soundcloud.com/cewt-talk)

### On the Cover: Basic EMT See Page 12

**Idaho State University offers several courses approved through Idaho Launch. For a full list of approved courses please scan the QR code on the next page.**

Approved courses include our apprenticeship programs, CNA Courses, on-line partner program courses through Career Step and much more. We have both online and in-person classes approved for funding. Funding for multiple courses must be approved. With the exception of apprenticeship programs, all funded courses must be taken in the same fiscal year.

Idaho Launch funding is a one-time funding option per recipient. If you are interested in Idaho Launch funding we encourage you to call our office. We can help you maximize your Idaho Launch Funding if approved.

Call ISU CEWT at (208) 282-3372 or visit [idaholaunch.com](http://idaholaunch.com). Funds open July 1, 2024.

# Summer Classes 2024

**REGISTRATION INFORMATION: PAGE 26**—3 Ways to Register for Classes; How to Find Us (Map); Policies & Procedures

## Classes (Alphabetically)

3d Modeling, Beginner.....05	Electrical Code, Safety, Grounding and Bonding.....21	Phlebotomy for Healthcare .....15
Administrative Assistant Fundamentals .....04	AEMT-Advanced .....12	Photography, Beginning .....18
Advanced Radiation Contamination Course (ARC) (DRC).....22	EMT-Basic <b>(Cover Photo)</b> .....12	Photography Workshop.....18
AHA BLS Provider CPR.....10	Figure Drawing .....19	Property and Casualty Insurance Test Prep .
AHA Heartcode BLS Provider CPR – Online Blended Learning.....10	Flagging.....23	Rescue Task Force - Hostile Event Interdiction .....23
AHA BLS Provider CPR – Refresher.....11	Hazardous Materials Response Technician (L2).....23	RAD DMA.....23
AHA Heartsaver Basic First Aid .....10	IAFF Approved Radiological Hazard Response Specialist Course.....22	Revit Architecture 2022, Intro to .....21
AHA Heartsaver First Aid/CPR/AED.....10	Idaho Detention Academy.....22	Roll Making for Beginners .....08
AHA Heartsaver Pediatric First Aid CPR/AED .....10	Ignite Their Future .....24	Unmanned Systems (Drone) for Ag .....18
Assistance with Medications .....11	Illustration, Botanical .....19	Whole Wheat Bread Making for Beginners ...08
Chair Makeover .....20	IV Basics.....15	Wreath Making .....20
Certified Family Basic Medications awareness and Infection Control.....11	Landscape Painting.....19	Wilderness Physical Therapy .....15
Certified Food Safety Manager .....22	Making Wind Chimes .....20	
Certified Nurse Assistant (CNA) .....13	Mandela Rock Painting .....20	
Cinnamon Roll Making .....08	Mastering Money & Behaviors With Ease & Flow .....04	
CNA Manual Skills Prep.....14	Medication Assistant-Certified (MA-C) .....12	
CNA Prep (ESL) .....14	Medication Math .....14	
CNA-Traditional Face to Face .....13	Mental Health First Aid.....13	
CNA-Web Supplemented .....13	Microsoft Excel .....05	
Confined Space Rescue Technician (L2) .....22	Mosaicking a Stepping Stone.....20	
Dental Assisting, Fundamentals of .....12	Oil Painting, Begginer .....19	
Desserts, Summer Deserts .....08	OSHA Bloodborne Pathogens .....14	
Digital Illustration, Beginner .....18	OSHA Safety Classes .....27	
Effective Delegation for Healthcare .....14	Paranormal Research.....20	
EKG Interpretation, Basic .....14	Phlebotomy Technician-Web Supplemented .....14	

## Classes by Category

- • BUSINESS.....
- • COMPUTERS.....
- • CULINARY ARTS.....
- • HEALTH AND WELLNESS.....
- • INDUSTRIAL.....
- • PERSONAL/PRO DEVELOPMENT.....
- • TRADES.....



**Idaho State University**

Continuing Education and Workforce Training

**All students must be 18+ unless otherwise noted.**

**Funding For Qualified Workforce Training Programs May Be Available Through Idaho Launch**





**NOTE:** ALL CLASSES HELD IN POCA TELLO UNLESS OTHERWISE STATED.

## Business

Develop your business acumen and marketability by learning to enhance your leadership skills, become a better team member and up your effectiveness and professionalism. **Students must be 18+ unless otherwise stated.**

### BUSINESS MANAGEMENT

#### **WEB:** Administrative Assistant Fundamentals

(Online Course) #6539

Learn what is needed to be an administrative assistant. Topics range from managing office functions to the proper use of office equipment. This online course will give you the essential skills you need to be successful in an administrative environment. This class is fully online, registered participants will receive 60 days to watch, review, and complete. A certificate will be available upon completion and successful submission of course work.

**Start Date:** Anytime    **Ends:** 60 days after registration  
**Hours:** 20                      **Fee:** \$50  
**Register at:** [cetrain.isu.edu/hero](http://cetrain.isu.edu/hero)

### SUCCESS SKILLS

#### Mastering Money & Behaviors With Ease & Flow (Online Course) #1145

In this course you will learn about your relationship with money, the underlying patterns and emotions learned in early childhood that create underlying habits, which affect your finances. You will learn basic personal finance & behavioral financial skills around money. **Taught by a Certified Money Coach.**

**SECTION 1 – Understanding Money Patterns, Beliefs and Behaviors.** Identify unconscious patterns and beliefs about money and money archetypes.

**Start Date:** 05/15/24    **Days Taught:** W  
**Hours:** 1.5                      **Fee:** \$40  
**Bldg/Rm:** ZOOM                      **Times:** 6 – 7:30 pm (1 session)

**SECTION 2 – Releasing Debt and Creating an Abundant Spending Plan.** Budgeting, paying off debt, and building an emergency fund.

**Start Date:** 05/29/24    **Days Taught:** W  
**Hours:** 1.5                      **Fee:** \$40  
**Bldg/Rm:** ZOOM                      **Times:** 6 – 7:30 pm (1 session)

#### **SECTION 3 – Accumulating Wealth and Lifetime**

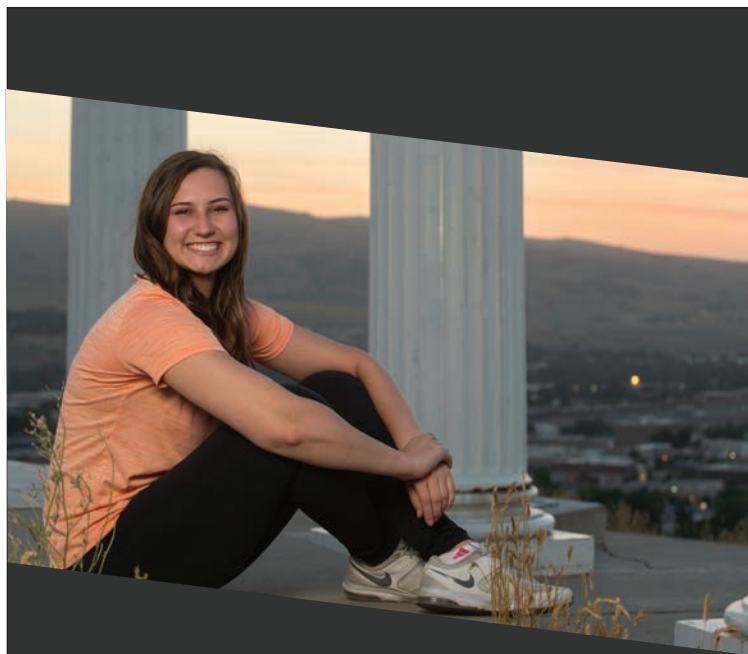
**Financial Well-Being.** The basics of investing tools and how to use them to maximize income, investing, and retirement planning.

**Start Date:** 06/12/24    **Days Taught:** W  
**Hours:** 1.5                      **Fee:** \$40  
**Bldg/Rm:** ZOOM                      **Times:** 6 – 7:30 pm (1 session)

#### **SECTION 4 – Conquer Financial Risk, Protecting Your Nest**

**Egg.** Understand asset protection, including insurance and estate planning.

**Start Date:** 06/26/24    **Days Taught:** W  
**Hours:** 1.5                      **Fee:** \$40  
**Bldg/Rm:** ZOOM                      **Times:** 6 – 7:30 pm (1 session)



**Funding May Be Available  
for Qualifying Programs.**

**Idaho Launch**  
[idaholaunch.com](http://idaholaunch.com)

**Eqqus**  
[www.equusidaho.com](http://www.equusidaho.com)

**Community Council of Idaho**  
[communitycouncilofidaho.org](http://communitycouncilofidaho.org)

# Computers

## SPREADSHEETS

### Accelerated Fundamentals/ Intermediate of Microsoft Excel #xxxx

Learn one of the most important skills necessary in Business and Home management. Increase your skills, improve your effectiveness, and help management make important decisions. Discover ways to use Excel for personal and professional use. Learn to work with multiple Sheets, customize page layout, adjust Rows and Columns, and control color, size, and appearance of data. Whether you manually enter data, import and export data, you will learn to create basic formulas, sort, and summarize information using Excel tools. *Students are encouraged to purchase a supplemental text book fund here: [amzn.to/3mtne66](https://amzn.to/3mtne66)*

**Start Date:** 5/07/24      **Days Taught:** T  
**Hours:** 12                      **Fee:** \$xx  
**Bldg/Rm:** RFC 264          **Times:** 6 – 9 pm (6 sessions)

## DESIGN SOFTWARE

### Beginner 3D Modeling #1205

3D modeling is a popular, valuable skill used in video games, 3D printing, and animation. This course will cover all the basics of 3D design, including modeling, sculpting, texturing, lighting, and rendering simple scenes using **Blender—a free 3D software!** Students will create a complete 3D model of their choosing (a simple character or an object), demonstrating both their artistic vision and technical skill in the ever-growing industry of 3D design. This course is designed for beginners of all backgrounds. No previous artistic experience is required! *Students must be 18+ or 16+ with parent/guardian enrollment. Bring your laptop with Blender installed.*

**Start Date:** 05/14/24                      **Days Taught:** T  
**Hours:** 12                                  **Fee:** \$90  
**Bldg/Rm:** RFC 264                      **Times:** 6 pm – 8 pm (6 sessions)

Please note: Students must be 18+ or 16+ with parent/guardian enrollment.

## LEARN TO CODE ONLINE IN 18 WEEKS



**Idaho State  
University**

Continuing Education  
and Workforce Training

Experience hands on training from  
industry professionals.

**Front End Developer Program:** Class Begins April 24  
**Back End Developer Program:** Class Begins April 24

[www.promineotech.com/isucodingbootcamps](http://www.promineotech.com/isucodingbootcamps)

## PART TIME | ONLINE | AFFORDABLE

This bootcamp is in partnership with  **PROMINEO TECH**



# Gift Certificates Available

Pocatello  
New Knowledge Adventures  
\$40 Membership Fee  
per semester

Idaho Falls  
Friends For Learning  
\$20 Membership Fee  
per semester

Contact Shirley Hockett  
Management Assistant  
ISU Continuing Education/Workforce Training  
208-282-2789  
mcelshir@isu.edu



GIVE THE  
*Gift*  
OF LIFELONG  
OF LEARNING



## POPULAR ONLINE COURSES

Learn from  
the comfort  
of home!

- 24-Hour Access
- Discussion Areas
- 6 Week Format

Our **instructor-led** online courses are informative, fun, convenient, affordable, and highly interactive. We focus on creating supportive communities for our learners. New course sessions begin monthly.

**Complete any of these courses entirely from your home or office and at any time of the day or night.**

Prices start as low as: **\$99**

### Accounting Fundamentals

Give yourself skills that are in high demand by exploring corporate accounting with a veteran instructor.

### Introduction to SQL

Gain a solid working knowledge of the most powerful and widely used database programming language.

### Project Management Fundamentals

Gain the skills you'll need to succeed in the fast-growing field of project management.

### Speed Spanish

Learn shortcuts to help you engage in conversational Spanish, as you build your language skills and develop fluency.

### Grammar Refresher

Whatever your goals, a grasp of English grammar is important if you want to improve your speaking and writing skills.

### Beginning Writer's Workshop

Get a taste of the writer's life and improve your writing skills in this introduction to writing creatively.

### Effective Business Writing

Improve your career prospects by learning how to develop powerful written documents that draw readers in and keep them motivated to continue to the end.

### A to Z Grant Writing

Learn how to research and develop relationships with potential funding sources, organize grantwriting campaigns, and prepare proposals.

### Introduction to Microsoft Excel

Become proficient in using Microsoft Excel and discover how to create worksheets, workbooks, charts, and graphs quickly and efficiently.

### Computer Skills for the Workplace

Gain a working knowledge of the computer skills you'll need to succeed in today's job market.

### Intermediate Microsoft Excel

Take your Microsoft Excel skills to the next level as you master charts, graphs, PivotTables, Slicers, Sparklines, AutoFilter, macros, and other advanced Excel functions.

### Creating WordPress Websites

Discover how to easily create blogs and websites with WordPress, the world's most popular Web publisher.

### Human Anatomy and Physiology

Learn the basic characteristics of the four main types of tissues, the general and special senses, cellular metabolism, body chemistry, and significant events in the life span, from fertilization through old age.

### SAT/ACT Prep Course

Master the reading, writing, English, and science questions on the ACT and new SAT.

### Explore a Career in Medical Coding

Learn how to use the CPT manual and the ICD-10-CM to find medical codes for any disease, condition, treatment, or surgical procedure.

### Medical Terminology:

#### A Word Association Approach

Prepare for a career in the health services industry by learning medical terminology in a memorable and enjoyable fashion.

Visit our website for more courses and view start dates for the courses that interest you!

[ed2go.com/isu](http://ed2go.com/isu)





## Data Analyst Career Certificate

There is a shortage of qualified Data Analysts in fields ranging from healthcare to finance, marketing, retail, operations, IT systems and business intelligence. Employment of analysts is

projected to grow 25 percent from 2019 to 2029 (source: discoverdatascience.org). Median wages in the United States range from \$79,000 to \$120,000 (source: US Bureau of Labor Statistics).

### Courses Include:

- SQL Fundamentals
- Advanced SQL
- Data Literacy Courses
- CompTIA Data+ Prep Course
- Capstone Project
- And More

**Start date: Anytime**

**Ends: 6-12 months after registration**

**Hours: 360-400**

**Fee: \$5,600**

**Register at: [cetrain.isu.edu/nclab](https://cetrain.isu.edu/nclab)**

## Python Developer Career Certificate

The TIOBE Index ranks Python as the #1 programming language as of September 2022. Big players like Quora, Facebook, YouTube, Dropbox, Pinterest, Reddit, and Netflix have most of their new code

written in Python. Average salaries in the United States range from \$82,000 to \$133,000 yearly (source: glassdoor.com).

### Courses Include:

- Introduction to Python
- Data Visualization with Python
- PCEP Prep Course
- Multiple Software Projects
- And More

**Start date: Anytime**

**Ends: 6-12 months after registration**

**Hours: 230-350**

**Fee: \$5,600**

**Register at: [cetrain.isu.edu/nclab](https://cetrain.isu.edu/nclab)**

**[cetrain.isu.edu/nclab](https://cetrain.isu.edu/nclab)**







**Idaho State  
University**

Continuing Education  
and Workforce Training

# Get In. Get Out. Get Working.

## Need a New Career? We've Got Your Back!

Trusted by some of the largest most respected names in healthcare, CareerStep, in partnership with **Idaho State University**, offers online training programs that teach you the skills employers need:

- Behavioral and Psychiatric Health Technician
- Computer Technician A+
- Dental Assistant
- EKG Technician
- Executive Assistant
- Healthcare IT Professional
- Hemodialysis Technician
- Medical Administrative Assistant
- Medical Assistant
- Medical Billing
- Medical Coding and Billing for Outpatient Services
- Medical Laboratory Assistant
- Medical Office Manager
- Medical Transcription Editor
- Mental Health Technician
- Microsoft Office 2019: Specialist
- Nutrition and Personal Trainer
- Patient Care Technician
- Pharmacy Technician
- Phlebotomy Technician
- Physical Therapy Aide
- Physician Coding Specialist
- Veterinary Assistant
- Veterinary Receptionist



**CareerStep**

Call or visit online to learn more:

**(877) 225-7151**

**[www.careerstep.com/  
lp/partner/ap/isu/](http://www.careerstep.com/lp/partner/ap/isu/)**

# Health and Wellness

Job security is always a concern. Learn transportable skills in the high demand, well-paying field of health services.

NOTE: For any health course that exceeds three days in length, please consider other commitments and use discretion when registering for these time sensitive, high-competency courses.

## CPR AND FIRST AID (AHA)

All courses are approved by American Heart Association (AHA) and taught by certified AHA instructors. Handouts can be found at [cetrain.isu.edu/handouts](http://cetrain.isu.edu/handouts).

### AHA Heartsaver Basic First Aid #1915

Discover how to reduce pain and injury by learning and practicing basic first-aid. One day you might save a life using this information! This class meets OSHA and DOT guidelines for emergency care. This class is First Aid ONLY and does not include CPR. CNAs, NAs, EMTs, daycare workers and parents would benefit from taking the course.

Please call 208-282-3372 for information on available classes. Hours: 4

### AHA Heartsaver First Aid/CPR/AED #1933

This course is designed to teach lay responders critical skills needed to respond to and manage an emergency until emergency medical services arrives. Skills covered in this course include first aid; choking relief in adults, children, and infants; and what to do for sudden cardiac arrest in adults, children, and infants. This course is ideal for health and fitness coaches, teachers and school staff, lifeguards, flight attendants, and anyone who needs a credential in first aid and CPR, including Certified Family Home.

Note: This course does not meet requirements for AHA Healthcare Provider BLS CPR.

ALL CLASSES: Hours: 6

Fee: \$65 (Includes textbook and certification card)

SECTION	START DATE	DAYS	TIMES	BLDG/RM
1	06/01/24	S	9am-3pm	RFC B1-66
2	8/10/24	S	9am-3pm	RFC B1-66

### AHA Heartsaver

#### Pediatric First Aid/CPR/AED #1916

This course meets American Heart Association (AHA) and Idaho Child Care Program (ICCP) requirements (meets daycare provider requirements for the Pocatello and Chubbuck area). Students will learn infant/child/ adult CPR, obstructed airways, use of a barrier device, AED, hands on training and pediatric first aid basics.

ALL CLASSES: Hours: 7

Fee: \$65 (Includes textbook and certification card)

SECTION	START DATE	DAYS	TIMES	BLDG/RM
1	6/8/24	S	9am-4pm	RFC B1-66

### AHA BLS Provider CPR #1930

This class teaches everything necessary to administer CPR in healthcare settings such as assessment of breathing and cardiac emergencies in adults, infants, and children with one-and-two rescuer CPR; adult and pediatric obstructed airway management; AED; and mouth-to-mouth ventilation.

ALL CLASSES: Hours: 5

Fee: \$65 (Includes manual)

SECTION	START DATE	DAYS	TIMES	BLDG/RM
Spring-17	5/3/24	F	5pm-10pm	RFC B1-66
Spring-18	5/9/24	TH	5pm-10pm	RFC B1-66
Spring-19	5/17/24	F	5pm-10pm	RFC B1-66
Spring-20	5/31/24	F	5pm-10pm	RFC B1-66
1	6/13/24	TH	5pm-10pm	RFC B1-66
2	6/21/24	F	5pm-10pm	RFC B1-66
3	6/27/24	TH	5pm-10pm	RFC B1-66
4	7/3/24	W	5pm-10pm	RFC B1-66
5	7/5/24	F	5pm-10pm	RFC B1-66
6	7/10/24	W	5pm-10pm	RFC B1-66
7	7/26/24	F	5pm-10pm	RFC B1-66
8	8/1/24	TH	5pm-10pm	RFC B1-66
9	8/15/24	TH	5pm-10pm	RFC B1-66
10	8/24/24	S	9am-2pm	RFC B1-66

### AHA Heartcode Provider CPR – Online Blended Learning #1929

Heartcode BLS Provider CPR is an online blended learning course option for students re-certifying or short on time. Students will be emailed a 'key' to access the online course. After completing the online portion, students attend a structured BLS Hands-On Session with an AHA Instructor. The online portion must be completed and the student will need to present the course certificate to the instructor at the two-hour hands-on-session.

HANDS-ON: Hours: 2

Fee: \$65 (Includes online course, hands-on session with AHA instructor, and certification card)

SECTION	START	DAYS	TIMES	BLDG/RM
Spring 16	5/22/24	W	5pm-7pm	RFC B1-66
1	6/4/24	T	5pm-7pm	RFC B1-66
2	6/12/24	W	5pm-7pm	RFC B1-66
3	6/18/24	T	5pm-7pm	RFC B1-66
4	7/02/24	T	5pm-7pm	RFC B1-66
5	7/11/24	TH	5pm-7pm	RFC B1-66
6	7/15/24	M	5pm-7pm	RFC B1-66
7	7/25/24	TH	5pm-7pm	RFC B1-66
8	7/31/24	W	5pm-7pm	RFC B1-66
9	8/05/24	M	5pm-7pm	RFC B1-66
10	8/08/24	TH	5pm-7pm	RFC B1-66
11	8/14/24	W	5pm-7pm	RFC B1-66
12	8/20/24	T	5pm-7pm	RFC B1-66
13	8/28/24	W	5pm-7pm	RFC B1-66

### AHA BLS Provider CPR – Refresher #1937

This class teaches everything necessary to administer CPR in healthcare settings such as assessment of breathing and cardiac emergencies in adults, infants, and children with one and- two rescuer CPR; adult and pediatric obstructed airway management; AED; and mouth-to-mouth ventilation.

**Must have a current AHA BLS CPR card.** If you do not have current card, please sign up for one of our AHA BLS CPR classes.

**ALL CLASSES: Hours: 3.5 Fee: \$50**

SECTION	START DATE	DAYS	TIMES	BLDG/RM
Spring-5	5/15/24	W	5:00pm-8:30pm	RFC B1-66
1	6/5/24	W	5:00pm-8:30pm	RFC B1-66
2	6/26/24	W	5:00pm-8:30pm	RFC B1-66
3	7/17/24	W	5:00pm-8:30pm	RFC B1-66
4	7/24/24	W	5:00pm-8:30pm	RFC B1-66
5	8/21/24	W	5:00pm-8:30pm	RFC B1-66
6	9/18/24	W	5:00pm-8:30pm	RFC B1-66

## ASSISTANCE WITH MEDICATIONS

### Assistance with Medications #1940

Qualify yourself to assist with medications in assisted living, group home and certified family home settings. Upon completion, you will know the legal requirements, be able to identify safety factors involved, and know your responsibilities and restrictions when assisting with medications. Closed-book written exam and skills exam are conducted at the end of class. Begin studying the course manual\* at least one week prior to the class. **This 8-hour course is taught in a one-day Saturday course or split between two 4 hour evenings.**

**NOTE:** These classes are fully face to face; online courses are available on request.

\*Required course manual available at [cetrain.isu.edu/med](http://cetrain.isu.edu/med)

ALL CLASSES: **Hours: 8 Fee: \$80**

SECTION	START	DAYS	TIMES	BLDG/RM
1	6/10-6/11/24	M/T	5:30pm-9:30pm	RFC B1-66
2	6/15/24	S	9:00am-5:30pm	RFC B1-66
3	6/24-6/25/24	M/T	5:30pm-9:30pm	RFC B1-66
4	7/8-7/9/24	M/T	5:30pm-9:30pm	RFC B1-66
5	7/20/24	S	9:00am-5:30pm	RFC B1-66
6	7/22-7/23/24	M/T	5:30pm-9:30pm	RFC B1-66
7	8/12-8/13/24	M/T	5:30pm-9:30pm	RFC B1-66
8	8/17/24	S	9:00am-5:30pm	RFC B1-66
9	8/26-8/27/24	M/T	5:30am-9:30pm	RFC B1-66
10	9/9-9/10/24	M/T	5:30am-9:30pm	RFC B1-66
11	9/21/24	S	9:00am-5:30pm	RFC B1-66
12	9/23-9/24/24	M/T	5:30am-9:30pm	RFC B1-66

### Certified Family Basic Medication Awareness and Infection Control #1939

The purpose of this course is to educate Certified Family Home (CFH) providers and substitute caregivers regarding medication safety and infection control. Participants will gain a basic understanding of medications including storing and caring for medications, six rights of medication oversight, medication side effects and warning signs, infection control, maintaining medication records and more. This course satisfies the requirements of IDAPA

16.03.19.402.01: "Each person assisting with resident medications must be an adult who successfully completed and follows the "Assistance with Medications" course available through the Idaho Professional Technical Education Program approved by the Idaho State Board of Nursing, or other Department-approved training."

**This course has 2 components:**

- Online coursework which includes the written, open-book exam.
- In-person skills demonstration and testing with an ISU Registered Nurse instructor.

Successful completion of this course will consist of an open-book written test with a passing rate of 80% or greater and participation in the skills demonstration and testing. Spanish course available. Call 208-282-3372 for details.

\*Required course manual available at [cetrain.isu.edu/med](http://cetrain.isu.edu/med)

ALL CLASSES: **Hours: 2.5 Fee: \$80**

SECTION	START	DAYS	TIMES	BLDG/RM
Summer-1	6/17/24	W	5pm-7:30pm	RFC B1-66
Summer-2	6/17/24	W	7:30pm-10pm	RFC B1-66
Fall-1	9/16/23	W	5pm-7:30pm	RFC B1-66
Fall-2	9/16/23	W	7:30pm-10pm	RFC B1-66



## MEDICATION ASSISTANT CERTIFIED

### Medication Assistant-Certified (MA-C) Web Supplemented #1975

The Medication Assistant-Certified (MA-C) is a CNA with specialized training in Medication Administration. This 120-hour course will cover the National Council of State Boards of Nursing (NCSBN) curriculum and will prepare students to take the MACE upon successful course completion. Topics will include ethical and legal responsibilities and consideration, basic pharmacology, medication safety, medication routes, drug classification and more.

#### SUMMER

**Start Date:** 5/29/24 to 9/25/24

**Days Taught:** W

**Hours:** 120

**Fee:** \$600

**Bldg/Rm:** RFC B1-67 **Times:** 10am-1pm

**MACE (Medication Assistant Certified Exam) cost not included in course fees.**

## DENTAL ASSISTING

### Fundamentals of Dental Assisting w/Expanded Functions #1920

Learn the basic concepts and skills of dental assisting including: terminology, dental charting, cavity classification, rubber dams, four-handed dentistry and suctioning through classroom, on-line and lab learning in an intensive 13-week course.

**ADDITIONAL COSTS INCLUDE:** Textbook, BLS Healthcare Provider CPR Training Certification (register at [cetrain.isu.edu/cpr](http://cetrain.isu.edu/cpr)), lab coat. Clinical hours may be outside normal class hours, but student will be provided clinical dates at least one month in advance. **In alignment with state requirements, students are required to attend 100% of the course to complete the program successfully.** For more information please see the handout on [cetrain.isu.edu/dental](http://cetrain.isu.edu/dental).

**Start Dates:** 08/13/24 to 12/04/24

**Days Taught:** M W + 2 Saturdays (TBA)

**Hours:** 110

**Fee:** \$650

**Bldg/Rm:** RFC B1-67 **Times:** 6 – 9:30 pm (30 sessions)



**Idaho State  
University**

**Continuing Education  
and Workforce Training**

## EMERGENCY MEDICAL TECHNICIAN

### AEMT–Advanced #1147

The Advanced Emergency Medical Technician (AEMT) course is an intensive and comprehensive hybrid program which includes online progressive learning and in-person skills labs, clinicals and field (ambulance observation) components. The primary focus of the Advanced Emergency Medical Technician is to provide basic and limited advanced emergency medical care and transportation for critical and emergent patients who access the emergency medical system. This course meets the Idaho and national requirements to apply for certification as an Advanced EMT. This course is a 14 -week course consisting of approximately 220 hours spread between online coursework, 54 hours of in-person lab/skills time, up to five 12-hour shifts in a clinical setting and ride-alongs with an ambulance crew.

**PREREQUISITE:** Must have achieved NREMT certification. Preference for EMTs with minimum 1 year of experience.

**ADDITIONAL COSTS:** Textbook, blood pressure cuff and stethoscope, clinical facility required immunizations, skills and written certification exams, American Heart Association BLS Healthcare Provider CPR training certification, drug screening, myClinicalExchange (**register at [cetrain.isu.edu/cpr](http://cetrain.isu.edu/cpr)**).

**NOTE:** This course requires an application and interview. Due to clinical requirements, a current background check is a course requirement. A failed background check will prevent participation in this course. For more information, including additional costs please see the handout on [cetrain.isu.edu/emt](http://cetrain.isu.edu/emt) for additional costs and information. Must be 18 years or older.

#### SUMMER

**Class Dates:** 05/09/24 to 08/08/24

**Days Taught:** TH

**Hours:** 220

**Fee:** \$1000

**Bldg/Rm:** EAMS 131 **Times:** 6 – 10 pm (14 sessions)

**(fee includes background check)**

### EMT – Basic #1925

Enhance career opportunities or augment training in nursing and allied health careers. This course meets the Idaho and national requirements to apply for certification as an EMT and will familiarize you with basic emergency medical equipment and treating the sick and injured. Upon completion, students must pass both a state skills exam and a national written exam for certification. This is an intensive course conducted over 16 weeks. Students attend 8-hours of class per week and participate in 7 Saturday Skills days. **In alignment with state requirements, students are required to attend 100% of the course to complete the program successfully.**

**ADDITIONAL COSTS:** Textbook, blood pressure cuff and stethoscope, immunizations, skills and written certification exams, BLS Healthcare Provider CPR training certification, drug screening, myClinicalExchange  
(register at [cetrain.isu.edu/cpr](http://cetrain.isu.edu/cpr)).

**NOTE:** This course requires an application and interview. Background checks are a course requirement. A failed background check will prevent participation in this course. For more information, including additional costs, please see the handout on [cetrain.isu.edu/emt](http://cetrain.isu.edu/emt).

**Priority Given to Applications Submitted Between May 15 – June 30, 2024**

### FALL

**Start Dates: 08/12/24 to 12/2/24**

**Days Taught: T TH 6 – 10 pm (29 sessions)**

**SAT: 8:30 am – 5:30 pm (7 sessions)**

**Hours: 172 Fee: \$1000**

**Bldg/Rm: EAMES 131**

**(fee includes background check)**

## HEALTH AND WELL-BEING

### Mental Health First Aid #1788

Just as CPR helps you assist an individual having a heart attack, Mental Health First Aid helps you assist someone experiencing a mental health or substance use challenge. In this 8-hour course, taught by a nationally certified Mental Health First Aid instructor, you will learn risk factors and warning signs for mental health and addiction concerns, strategies for how to help someone in both crisis and non-crisis situations, and where to turn for help. Learn about recovery and resiliency – the belief that individuals experiencing these challenges can and do get better, and use their strengths to stay well. Participants will receive an official Mental Health First Aid certificate.

**Please call 208-282-3372 for information on scheduling additional classes.**

**Hours: 8 classroom hours + 30-minute lunch break**

**Fee: This class is valued at \$170. Thanks to a generous grant from Optum Idaho, learners may attend at no charge through June 30th.**

**SECTION DATE DAY TIME BLDG/RM**

1	5/15&5/16/24	W & TH	4pm-9pm	TBD
2-Spanish	5/16&5/23/24	W & TH	5:30pm - 9:30pm	TBD
3	6/7/24	F	9am-5:30pm	

## CERTIFIED NURSING ASSISTANT – CNA

### Certified Nurse Assistant (CNA)

Prepare yourself for employment opportunities as a nursing assistant in extended care facilities, hospitals, home-care and hospice situations. This course meets the following requirements for Idaho registration of nursing assistants:

**1) 88 hours of classroom instruction**

(including discussion, videos, hands-on lab experiences)

**2) 32 hours clinical experience** in health care facilities

**3) Guidance preparing for manual skills** testing and written exam as required by the State of Idaho for placement on state registry.

CNA courses are available with several options:

**12 week–Daytime class:** meets 6 hours/session; twice/week

**14 week–Afternoon class:** meets 5 hours/session; twice/week

**16 week–Web Supplemented Daytime/Evening class:** meets in-person for lab skills and clinical.

**20 week–Daytime class** meets 3 hours/session; twice/week; allows student more time for learning and skill mastery.

**ADDITIONAL COSTS INCLUDE:** Textbooks, BLS Healthcare Provider CPR training certification (register at [cetrain.isu.edu](http://cetrain.isu.edu)), clinical attire, clinical tools and immunizations.

**ADDITIONAL INFORMATION: Clinical hours may be outside normal class hours**, but student will be provided clinical dates at least one month in advance. In alignment with state requirements, students are required to attend 100% of the course to complete the program successfully. **Due to clinical requirements students must be 16+ by first day of clinicals.** For more information please see the handout at: [cetrain.isu.edu/cna](http://cetrain.isu.edu/cna)

### CNA– Traditional Face To Face #1955

All Classes: Hours: 120 Fee: \$800 (includes testing fees)

SECTION	START	END	DAY	TIME	BLDG/RM
8	6/3/24	8/19/24	M/W	9am-3pm	RFC B1-63
1	8/6/24	12/12/24	T/TH	9am-12pm	RFC B1-63
2	8/13/24	11/07/24	T/TH	1pm-6pm	RFC B1-63
3	9/9/24	11/25/24	M/W	9am-3pm	RFC B1-63

### CNA – Web Supplemented #1956

Do you want to take a CNA class but would rather take a portion of it online? This web-supplemented course reduces face-to-face time by almost half.

All Classes: Hours: 120 Fee: \$800 (includes testing fees)

SECTION	START	END	DAY	TIME	BLDG/RM
7-accelerated	6/18/24	7/25/24	T/TH	9am-3pm	RFC B1-63
1	8/23/24	11/22/24	F	9am-3pm	RFC B1-63
2	9/4/24	12/11/24	W	4pm-10pm	RFC B1-63



**Idaho State  
University**

**Continuing Education  
and Workforce Training**

**ESL CNA Prep #1963**

ESL students entering the CNA program are invited to join a supplemental prep class. Students will study various topics to strengthen English language skills and can provide help with basic pre-CNA vocabulary before starting the CNA. This course is recommended for ESL students prior to registering for the CNA course. Students can attend any course sections, but the 18 week course is recommended as it will allow more time for learning and skill mastery. For more information please see the handout at: [cetrain.isu.edu/cna](http://cetrain.isu.edu/cna)  
All Classes: **Hours: 1.5 Fee: NONE**

**SEC. REG.OPEN REG. ENDS DAY TIME BLDG/RM**

1	8/20/24 (flexible admission until 3/8/25)	Registration ends 3/8/25	T/TH 1:30pm-3:00pm	RFC TBD
---	---	--------------------------------	--------------------	---------

**OPEN ENROLLMENT 08/20/24 T/TH 1:30 – 3:00pm TBD  
(flexible admission until 03/08/25, when registration ends)**

**CNA Manual Skills Prep #1953**

Need additional guidance with the manual skills portion of the nursing assistant's role? The course includes web videos of each testable skill, a copy of all documents needed to prepare for the CNA manual skills exam, and four hours of face-to-face training with an Idaho-approved nursing assistant instructor.

**Call to set up: 208-282-3372**

**Fee: \$250 (\$150 for ISU CNA students)**

**ONLINE HEALTH PROGRAMS**

*Participants registered for the online health programs have 30 days to complete the course.*

**Basic EKG Interpretation**

(Online Course) #1901

This class covers concepts including basic heart anatomy and physiology, cardiac, conduction, rhythm interpretation, distinguishing EKG from cardiac monitoring, and practice interpreting rhythm strips! Students will complete twelve hours of online training. At the completion, an online exam is required with 80% competency to pass.

**Register at: [cetrain.isu.edu/ekg](http://cetrain.isu.edu/ekg)**

**Start Date: Anytime    Ends: 30 days after registration  
Hours: 12                      Fee: \$40**

**Check Out Our New  
Wilderness Physical  
Therapy Class  
See Next Page for Details.**

**OSHA Bloodborne Pathogens**

(Online Course) #6100

This user-friendly, on-line-based course allows students to complete the course at their own convenience. The OSHA Bloodborne Pathogen Standard is the focus, with current information the three most devastating and common bloodborne pathogens. Online handouts and competency quizzes assure the student's competency.

**Register at: [cetrain.isu.edu/bbp](http://cetrain.isu.edu/bbp)**

**Start Date: Anytime    Ends: 30 days after registration  
Hours: 4                      Fee: \$10**

**Effective Delegation for Healthcare**

(Online Course) #1934

For delegation to be appropriate, it is necessary to understand the Board of Nursing's standards, use effective communication skills, and provide instruction that leads to knowledge and competence. In 2014, limits on the role of unlicensed assistive personnel (UAP), such as the CNA, were removed from the rules of the Idaho Board of Nursing, allowing nurses more freedom in delegating tasks to UAPs. This on-line series clarifies how this change will promote high quality, patient-focused, and cost-effective care in the community environment.

**Register at: [cetrain.isu.edu/delegation](http://cetrain.isu.edu/delegation)**

**Start Date: Anytime    Ends: 30 days after registration  
Hours: 5.5                      Fee: FREE**

**Medication Math (Online Course) #1902**

Newly Revised! Do you struggle with math, but need to understand it to safely prescribe or administer medication? This course is for you! Concepts include conversion between systems of measurement, dimensional analysis, decimals and percentages, and applying the math to real-world scenarios. Self-paced course. **Participants have 30 days to complete the course.**

**Register at: [cetrain.isu.edu/medmath](http://cetrain.isu.edu/medmath)**

**Start Date: Anytime    Ends: 30 days after registration  
Hours: 6                      Fee: \$10**

**PHLEBOTOMY TECHNICIAN****Phlebotomy Technician – Web  
Supplemented #1919**

The ISU phlebotomy program prepares you to take a national certification exam upon course completion. Topics range from blood draws and laboratory procedures to employability skills and safety. **Due to clinical requirements, students must be 18 years or over to take this course.** Sixty hours of this 160-hour course are completed online with user-friendly videos, assignments, handouts and quizzes. Students will meet twice per week for the skills portion of the course, followed by 40 hours of clinical experience, and blood draws with a



clinical agency. Clinical hours are likely to be out of normal course hours due to agency operating hours, but a clinical schedule will be provided in advance. Total clinical hours are dependent on students completing at least 100 blood draws. In alignment with state requirements, students are required to attend 100% of the course to complete the program successfully.

**ADDITIONAL COSTS:** Textbook, uniform, immunizations and BLS provider CPR certification course (register at [cetrain.isu.edu/cpr](http://cetrain.isu.edu/cpr)). Some clinical sites may require a drug screen, myClinicalExchange.

**ADDITIONAL REQUIREMENTS:** Health Insurance: All students are required to have health insurance before entering the clinical setting. Background Check: Background checks are a course requirement. A failed background check will prevent course participation. For more information, including additional costs, please see the handout on [cetrain.isu.edu/phlebotomy](http://cetrain.isu.edu/phlebotomy) ALL CLASSES: Hours: 160 Fee: \$1000

SECTION	START	END	DAY	TIMES	BLDG/RM
Spring-4	5/8/24	10/09/24	W	2pm-5pm	RFC B1-67
1	7/23/24	11/12/24	T TH	5:15pm-7:15pm	RFC B1-67
2	9/18/24	12/18/24	W	2pm-5pm	RFC B1-67

### IV Basics #1907

This comprehensive IV Therapy Training course is designed to provide healthcare professionals, including nurses, paramedics, and medical assistants, with the knowledge and practical skills necessary to safely and effectively perform intravenous therapy. **Note:** This course is designed for healthcare professionals with prior medical training and knowledge. Successful completion of this course does not constitute a license to practice IV therapy, and participants should ensure they meet their local regulatory requirements for IV therapy practice.

**Start Date:** 07/10-07/31/24      **Days Taught:** W  
**Hours:** 12      **Fee:** \$250  
**Bldg/Rm:** TBD      **Times:** 12pm – 3pm  
**(4 sessions)**

### Phlebotomy for Health Care #1909

Are you a RN, LPN or Medical Assistant interested in mastering the essential skill of drawing blood for diagnostic purposes? Our Phlebotomy for Healthcare course is designed to provide comprehensive training in the art and science of phlebotomy. This course is ideal for individuals pursuing a career in healthcare or current healthcare professionals looking to enhance their skills.

**Start Date:** 5/15-05/29/24      **Days Taught:** W  
**Hours:** 6      **Fee:** \$250  
**Bldg/Rm:** RFC B1-67      **Times:** 5pm-7pm  
**Check back at** [cetrain.isu.edu](http://cetrain.isu.edu)

## PHYSICAL THERAPY

### NEW Wilderness Physical Therapy

This 6-contact hour .6 PT CEU approved module is designed and implemented by physical therapist wilderness EMTs and is geared for physical therapists, physical therapy assistants and other health professionals.

**This class is fully online, registered participants will receive 90 days to watch, review, and complete.** A certificate will be available upon completion and successful submission of all course work.

**Start Date:** Online-Ongoing  
**Hours:** 6      **Fee:** \$149  
**Bldg/Rm:** Online  
**Check back at** [cetrain.isu.edu](http://cetrain.isu.edu)



## Mental Health Awareness Week

October 2024  
 Free Mental Health Events All Week.  
 Check [cetrain.isu.edu/MHF](http://cetrain.isu.edu/MHF)



## Featured Instructor



### Deb Wright • EMT Instructor

Debra Wright graduated from Ricks College in 1984 with an Emergency Medicine degree. She also received the Hope B Jones Award for being the Outstanding Emergency Medical Student. Since graduating, Debra has had many opportunities to use her knowledge and increase her expertise. Her current positions include Lead EMT Instructor for ISU's Workforce Training Program, and Advanced EMT at the Shelley/Firth Ambulance, where she previously served as Chief Deputy. She is currently the Outdoor Emergency Care Supervisor of the Intermountain Division of the National Ski Patrol and a member of the Kelly Canyon Ski Patrol. Debra has also served as the Chief Deputy Coroner for Bingham County, Idaho, where she obtained her national certification as an American Board of Medicolegal Death Investigator. Debra has always enjoyed teaching and helping students, old or young, gain additional medical knowledge.

---

To apply for our EMT Course please visit:  
[cetrain.isu.edu/EMT](http://cetrain.isu.edu/EMT)



## Featured Staff



### Emilee Wheeler • Health Programs Admin

Emilee Wheeler is one of the newest addition to the CEWT team! As an administrative assistant specializing in noncredit health programs, Emilee plays a pivotal role in facilitating courses such as CPR, Mental Health First Aid, CNA, and Phlebotomy. With her vibrant personality and knack for organization, she has proven to be vital asset to our health programs team as well as our overall department.

Coming back to her hometown of Pocatello, Emilee brings a wealth of enthusiasm and dedication to her work at Idaho State University. With a bachelor's degree in math education from BYU-Idaho under her belt, she's now setting her sights on a master's degree in Instructional Design and Technology. Her driving passion? To improve the accessibility of online classes for learners of all backgrounds and abilities.

Outside of her professional pursuits, Emilee finds joy in the simple pleasures of life. Whether she's lost in the pages of a captivating book, whipping up culinary delights in the kitchen, or exploring the great outdoors, her adventurous spirit knows no bounds.



## Industrial Maintenance

*Required knowledge for industrial tradespeople, including controls, PLC basics and fluid dynamics.*

### ELECTRONICS

#### **NEW Introduction to Unmanned Systems (Drone) in Precision Agriculture #1214**

This course will provide students with the skills necessary to perform aerial scans of a variety of crops to capture and process the data per customer requirements. Students will receive flight training on field scouting drones to include the DJI Mavic Air 2 and the Mavic 2 Enterprise. Additional training on the Skydio 2+ may be provided if time permits.

**Equipment:** Students will receive flight training on the DJI Mavic 3 Multispectral, the DJI Phantom 4 RTK Multispectral, and the DJI M300 RTK equipped with the Altum -PT multispectral/ thermal payload. **Software:** Students will receive training on the mission planning apps and the data processing programs to include Drone Deploy, Pix4D Fields, and DJI Terra. **Required materials:** A laptop computer or tablet (PC/Android preferred). I-Pads work well with most of the software, however MAC computers tend to have problems with some of the programs that we use. A notebook for recording field observations and conditions.

**Course Prerequisites:** No prior flying experience is required. **Completion of the FAA TRUST test is a mandatory requirement prior to operating a drone.** **Notes:** Bring a water bottle and sunscreen. As this class is conducted over lunch, please feel free to bring a snack with you.

**Start Date:** 05/13/24  
**Hours:** 12  
**Bldg/Rm:** T&T 206

**Days Taught:** M W  
**Fee:** \$99  
**Times:** 10 am – 2 pm  
(3 sessions)

**Check Out Our  
New Art Classes  
See Next Page for Details.**

## Personal/ Professional Development

### ART, LITERATURE & WRITING

#### **Beginning Photography (D/SLR) #1155**

Basic understanding of photography. This class will discuss Aperture, Shutter Speed, ISO, and go over some Composition. You will learn how to operate your own camera. This class is geared for DSLR Cameras. We will go over settings in class and if weather permits we will venture out on campus to get some hands on experience. The class will have props for you to practice during class time. You will need to bring your DSLR camera that you want to learn. Students are encouraged to bring their camera's owner's manual, or be able to look it up online, or on your phone. The goal of this class is to make you feel more comfortable taking your camera out and have an understanding of the basics. This is a beginner class.

**Start Date:** 05/09/24  
**Hours:** 8  
**Bldg/Rm:** RFC 263

**Days Taught:** TH  
**Fee:** \$50  
**Times:** 6:30 pm – 8:30 pm  
(4 sessions)

#### **Photography (D/SLR) Workshop #1215**

This is an opportunity to build on the basic skills of your photography. This workshop is intended to be a hands on workshop. The skills we will be developing out in the field are Aperture, Shutter Speed, ISO, Composition, Rule of Thirds, Lighting, etc. We will work together at trying to achieve the best images possible. This is a 4 week session. You will need to bring a notebook, pen. Please dress appropriately for the weather. **Calls meets 1st week at Edison Fichter Nature Area.**

**Start Date:** 06/08/24  
**Hours:** 8  
**Bldg/Rm:** RFC 263

**Days Taught:** S  
**Fee:** \$50  
**Times:** 9 am – 11 am  
(4 sessions)

#### **Beginner Digital Illustration #1206**

Venture into the captivating world of digital art with Procreate, the leading illustration app on iPad! Learn essential digital illustration techniques, including how to use

brushes, layers, blending modes, and effects. This beginner's course is designed for aspiring illustrators, seasoned artists transitioning to digital platforms, or anyone with a love for visual storytelling. Through in-class demos and hands-on exercises, students will emerge from this course with all the technical skills needed to create their own digital art.

**Students must be 18+ or 16+ with parent/guardian enrollment. Students are required to purchase the app prior to the class (\$10) and bring their own iPad.**

**Start Date: 07/03/24**  
**Hours: 6**  
**Bldg/Rm: RFC/RM 377**

**Days Taught: W**  
**Fee: \$90**  
**Times: 6 – 8 pm (3 session)**

### **Beginning Oil Painting #1217**

Take up a new hobby or expand your skills in one of our oil painting classes.

#### **SECTION 1 – Traditional Still Life**

Explore the timeless art of still life painting through this beginner course! From brush techniques to color mixing, students will learn the foundations of oil painting. Learn to capture the nuances of light, shadow, and form as they bring everyday objects to life on canvas. By the end of the course, students will have created their own still life masterpiece, showcasing their newfound skills and artistic vision. All materials will be provided!

**Students must be 18+ or 16+ with parent/guardian enrollment.**

**Start Date: 05/15/24**  
**Hours: 9**  
**Bldg/Rm: T&T 333**

**Days Taught: W**  
**Fee: \$90**  
**Times: 6 – 9 pm (3 session)**

#### **SECTION 2 –Portraits**

Explore the timeless art of portrait painting through this beginner course! From brush techniques to color mixing, students will learn how to capture emotion, expression, light, and shadow through paint. By the course's conclusion, participants will have crafted a personal portrait or figure painting, showcasing their blossoming talents and technical ability. All materials will be provided!

**Students must be 18+ or 16+ with parent/guardian enrollment.!**

**Start Date: 07/02/24**  
**Hours: 9**  
**Bldg/Rm: T&T 333**

**Days Taught: T**  
**Fee: \$90**  
**Times: 6 – 9 pm (3 session)**

### **NEW Beginner Watercolor Painting #1177**

Explore the fun of watercolor painting in this beginner-friendly course! Whether you're picking up a brush for the first time or seeking to refine your skills, this class offers a comprehensive introduction to watercolor techniques,

materials, and creative expression. From mastering basic washes and color mixing to exploring brush effects, you'll learn the fundamentals step-by-step under the guidance of an experienced instructor. All materials will be provided! **Students must be 18+ or 16+ with parent/guardian enrollment.**

**Start Date: 07/23/24**  
**Hours: 9**  
**Bldg/Rm: T&T 333**

**Days Taught: T**  
**Fee: \$90**  
**Times: 6 – 9 pm (3 session)**

### **NEW Botanical Illustration #1260**

This course is designed for beginner and seasoned artists alike to illustrate the natural beauty of plants. From mastering foundational drawing skills to understanding botanical anatomy, each session will offer hands-on instruction and guided practice to cultivate a deeper appreciation for the natural world and hone the timeless art of botanical illustration. This course will primarily focus on using pencils, pens, and watercolor. All materials will be provided!

**Students must be 18+ or 16+ with parent/guardian enrollment.**

**Start Date: 05/23/24**  
**Hours: 9**  
**Bldg/Rm: T&T 333**

**Days Taught: TH**  
**Fee: \$90**  
**Times: 6 pm – 9pm (3 sessions)**

### **NEW Landscape Painting Outdoors #1261**

In this "plein air" style painting class, students will immerse themselves in the vibrant world of outdoor painting, capturing the landscapes of Pocatello! Participants will explore various techniques for translating the play of light, color, and atmosphere onto canvas. Through live demos, constructive critiques, and individualized guidance, students will develop their observational skills and artistic sensibilities while embracing the spontaneity and challenges of painting outdoors. This course will primarily focus on using oil paint. All materials will be provided!

**Note: Class days may be subject to change depending on the weather.**

**Students must be 18+ or 16+ with parent/guardian enrollment.**

**Start Date: 07/11/24**  
**Hours: 9**  
**Bldg/Rm: RFC 162**

**Days Taught: TH**  
**Fee: \$90**  
**Times: 6 pm – 9pm (3 sessions)**



**Idaho State University**

**Continuing Education and Workforce Training**

**NEW Figure Drawing #1262**

In this beginner figure drawing class, students will focus on capturing the human form by drawing from a clothed live model. From understanding anatomy and proportions to mastering shading and gesture, students will hone their skills through a series of dynamic exercises and guided practice sessions. This course provides a supportive environment for artists of all levels to deepen their understanding of the human figure and elevate their drawing abilities to new heights. This course will primarily focus on using charcoal. All materials will be provided!

**Students must be 18+ or 16+ with parent/guardian enrollment.**

**Start Date: 07/24/24**  
**Hours: 9**  
**Bldg/Rm: T&T 333**

**Days Taught: W**  
**Fee: \$90**  
**Times: 6 pm – 9pm**  
**(3 sessions)**

**CRAFTS AND SEWING****Mosaicking a Stepping Stone #1882**

Please bring your stone and any objects you wish to incorporate into the design. Students are required to bring eye protection, masks, and gloves. **You must be 18 years of age or older to take the class.**

**Section 1**

**Start Date: 05/13/24**      **Days Taught: M**  
**Hours: 6**      **Fee: \$55**  
**Bldg/Rm: Poky Glass Art Studio, 515 N Main St.**  
**Times: 6 – 8 pm (3 sessions)**

**Section 2**

**Start Date: 05/14/24**      **Days Taught: T**  
**Hours: 6**      **Fee: \$55**  
**Bldg/Rm: Poky Glass Art Studio, 515 N Main St.**  
**Times: 6 – 8 pm (3 sessions)**

**Chair Makeover #1018**

Bring a single chair you want to give a makeover to class and transform it into a fun porch chair or make over one for your dining table to start a set.

**Start Date: 07/09/24**      **Days Taught: T**  
**Hours: 2.5**      **Fee: \$40**  
**Bldg/Rm: The Elwen Cottage, 334 N Main St.**  
**Times: 6 – 8:30 pm (1 session)**

**Wreath Making #1778**

Come enjoy making a one-of-a-kind, classy farmhouse-style wreath created by you! All materials will be provided to create a wreath that will be a perfect focal point for your front door or anywhere.

**Start Date: 05/09/24**      **Days Taught: TH**  
**Hours: 2.5**      **Fee: \$40**  
**Bldg/Rm: The Elwen Cottage, 334 N Main St.**  
**Times: 6 – 8:30pm (1 session)**

**Mandala Rock Painting #1016**

Keep calm and relax by learning the art of mandala rocks. In this workshop, participants will learn the history and meaning behind mandala art, and apply that knowledge to their own mandala rock art. Whatever you decide, you'll certainly enjoy this serene workshop, and share your newly-discovered art form with friends and family.

**Start Date: 06/04/24**      **Days Taught: T**  
**Hours: 2.5**      **Fee: \$40**  
**Bldg/Rm: The Elwen Cottage, 334 N Main St.**  
**Times: 6 – 8:30 pm (1 session)**

**Making Wind Chimes #1532**

Transform vintage kitchen gadgets—like spoons and measuring cups—into a one-of-a-kind wind chime. Each student will take home a completed chime to hang all year long. All materials provided.

**Start Date: 05/28/24**      **Days Taught: T**  
**Hours: 2.5**      **Fee: \$40**  
**Bldg/Rm: The Elwen Cottage, 334 N Main St.**  
**Times: 6 – 8:30 pm (1 session)**

**Garden Signs #1017**

A fun free hand painting class, all supplies provided. Words can vary.

**Start Date: 06/19/24**      **Days Taught: W**  
**Hours: 2.5**      **Fee: \$40**  
**Bldg/Rm: The Elwen Cottage, 334 N Main St.**  
**Times: 6 – 8:30 pm (1 session)**

**ISU CEWT has a weekly  
Podcast.**

**We post new podcasts  
every Wednesday.  
Listen to CEWT Talk today!**



**Idaho State  
University**

Continuing Education  
and Workforce Training



## PERSONAL INTEREST

### Paranormal Research #1223

The class will focus on the equipment used in the field (cameras, pendulums, dowsing rods, various electronic equipment, etc.), how to conduct an investigation, paranormal phenomenon, developing your own skill set for investigations and debunking. Members of her team will be guest speakers and will speak of their own abilities and will teach how to develop your natural abilities and will provide resources for the student. The class will consist of 5 weeks (2 hours per class) of classroom sessions followed by one paranormal investigation where the student can put their new skills to work. **Class limited to 15 participants.**

**Start Date: 05/03/24**    **Days Taught: F**  
**Hours: 12**                      **Fee: \$50**  
**Bldg/Rm: RFC 108 S**    **Times: 6 – 8 pm (6 sessions)**  
**Class will not be held on May 17, 2024**

## Trades

*Industries across the U.S. are looking for individuals skilled in welding, machining, and flagging certification. Take advantage of our courses which provide you with the skills you need for the job you want. **Students must be 18+ unless otherwise stated.***

## BUILDING CONSTRUCTION

### 2023 NEC Code Update #1580

Every 3 years the National Electrical Code is revised and new code changes are included and adopted by the states. To renew their licenses in Idaho, Master and Journeyman electricians must have 24 hours of continuing education, 8 hours of which must be on the current code changes to renew their licenses.

**Start Date: 05/09/24**    **Days Taught: TH**  
**Hours: 8**                      **Fee: \$115**  
**Bldg/Rm: RFC 108 S**    **Times: 8 am – 5 pm (1 session)**

### Electrical Grounding and Bonding (NEC 2023) #1668

This 8 hour class highlights one of the most important, but least understood articles in the National Electrical Code®—Grounding and Bonding. Simply put, proper grounding and bonding protects your employees from electric shock and your plant and equipment from heat and fire. We will aim at reducing these risks and help answer any power quality issues you may be experiencing. **BOOKS: Mike Holt Bonding and Grounding Book**

**Start Date: 05/10/24**    **Days Taught: F**  
**Hours: 8**                      **Fee: \$115**  
**Bldg/Rm: RFC 108 S**    **Times: 8 am – 5 pm (1 session)**

### Electrical Safety Update (NFPA 70E) #1530

This course is based on the NFPA 70E: Standard for Electrical Safety and has a variety of Safety Tips, rules, and Regulations. Topics include electrical safety, safety audits, personal protective equipment, and behavior-based safety. This course will also provide 8 hours of the 24 continuing education hours needed by Master and Journeyman Electricians. **This course is approved in Idaho, Utah, Montana and Wyoming.**  
**Idaho #20-1010970 • Utah #20315 • Montana • Wyoming #WY-23-199C**

**Start Date: 06/14/24**    **Days Taught: F**  
**Hours: 8**                      **Fee: \$115**  
**Bldg/Rm: RFC 108 S**    **Times: 8 am – 5 pm (1 session)**

## DRAFTING

### Introduction to Revit Architecture 2022 #1207

This workshop will cover the basic principles of Autodesk Architectural Revit 2022, a building information modeling (BIM) program. Participants learn the software by working on projects and creating high-quality floor plans, elevations, 3D perspectives, and renderings for client presentations using some of the new features included with the latest version of Autodesk Revit architecture software. **Fluency in Autodesk AutoCAD is strongly recommended.**

**Start Date: 05/01/24**                      **Days Taught W/TH**  
**Hours: 20**                                      **Fee: \$185**  
**Bldg/Rm: EAMES 197**                      **Times: 5:30 pm - 7:30 pm**  
**(5 Sessions)**

## OSHA/SAFETY TRAINING

### OSHA: See Page 27

### Certified Food Safety Manager #6521

This certified Food Safety Manager Course (CFSM) covers food safety issues, regulations, and the techniques necessary to maintain a food safe environment. Handling food correctly is not only the law, but it improves public safety and lowers costs. Learn to implement essential food safety practices and create a culture of food safety. Food safety is critical to sales and the continued patronage of



to recognize the presence of hazardous substances in an emergency. They will also learn the ability to identify the hazardous substances, if possible. The student will have understanding of the role of the First Responder Awareness individual in the employer's Emergency Response Plan, including Site Security and Control and the U.S. Department of Transportation's Emergency Response Guidebook (ERG). **IFSAC/Pro-Board Certified Course.**

**Pre-requisites:** Hazardous Materials Awareness and Operations.

**Start Date:** 5/07/-5/10/24      **Days Taught:**T-F  
**Hours:** 40      **Fee:** \$1988  
**Times:** 8 am – 7 pm  
**Bldg/Rm:** ARM DRC Armory Room

### **RAD DMA #6703**

RAD DMA is Qal-Tek's introductory course to Radiation Emergency Response. DMA stands for Detect, Measure & Analyze. This course is aimed at practical application knowledge, basic rules of thumb, simple tools and hands-on practice. The goal is to simplify response and empower students to collect the best data by asking the right questions.

**Pre-requisites:** None

**Start Date:** 6/11/-6/12/24      **Days Taught:**T-W  
**Hours:** 12      **Fee:** \$833  
**Times:** 8 am – 12 pm  
**Bldg/Rm:** ARM DRC Armory Room

### **Rescue Task Force - Hostile Event Interdiction#6706**

Course provides a unified response capability amongst the Law Enforcement, Fire, Rescue and EMS disciplines with proven tactics, techniques and procedures for a follow up response to a neutralized or mitigated hostile event. Once the threats are neutralized or contained, it is imperative to initialize Fire, Rescue and Emergency Medical Services to assess, treat and transport mass casualty victims.

**Pre-requisites:** The course is open to Law Enforcement, Military personnel, Fire, Rescue and Emergency Medical Services ONLY. Each officer or Medical Services personnel will show or verify employment prior to course registrations.

**Start Date:** 7/17/-7/19/24      **Days Taught:**W-F  
**Hours:** 24      **Fee:** \$800  
**Times:** 8 am – 5 pm  
**Bldg/Rm:** ARM DRC Armory Room

### **Tactical Medical Response 1 & 2 (DRS) #6711**

This course combines the basic and advanced levels of training to prepare individuals to be part of a tactical medical program and/or response to incidents involving trauma. This class will cover basic and advanced Tactical Medical Care.

Advanced hands-on skills and team management concepts will be taught to successfully prepare the participants for field service.

**Pre-requisites:** EMT-B  
**Start Date:** 8/12-8/16/24      **Days Taught:** M-F  
**Hours:** 40      **Fee:** \$1000  
**Times:** 8 am – 5 pm  
**Bldg/Rm:** ARM DRC Armory Room 301

## **TRAFFIC CONTROL**

### **Flagging #1195**

In this class you will learn the responsibilities of the flagger: basic signals, flagging systems, signing, channeling devices and traffic control practices. This class meets requirements for training programs recognized by the Idaho Transportation Department. **Must have valid ID to present to instructor before obtaining your flagging card.**

#### **Section 2**

**Start Date:** 05/18/24      **Days Taught:** S  
**Hours:** 8      **Fee:** \$140  
**Bldg/Rm:** RFC 108 N      **Times:** 8 am – 4 pm (1 session)

## **TEACH FOR CEWT**

We are always looking for talented community members to join our growing list of instructors.

If you are interested in teaching a course through ISU Continuing Education and Workforce Training please contact us at:

**208-282-4103**





Idaho State  
University

College of  
Technology

# Ignite Their Future

SCIENCE TECHNOLOGY ENGINEERING and MATH

## Summer Camps

*Ignite your child's passion for STEM with an exciting summer camp where they can LEARN, BUILD, & have FUN!*

**SAVE THE DATES!**

**CAMPS FOR  
MIDDLE SCHOOL**

June 3-7

**HIGH SCHOOL**

June 10-14

Registration Opens April 22

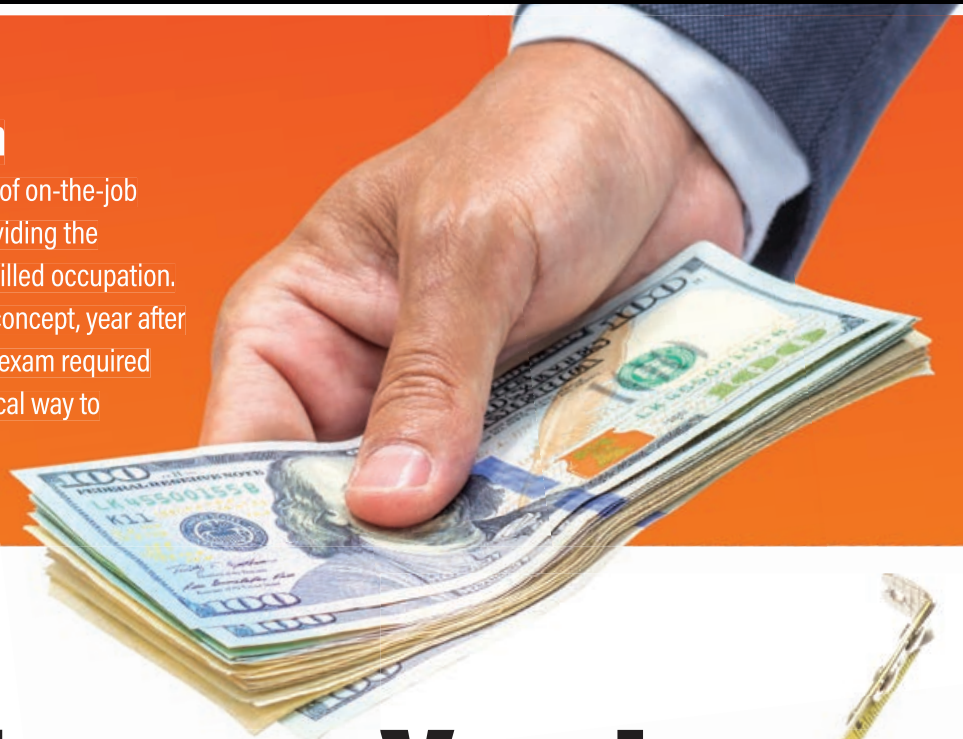
**INFO & REGISTRATION**  
[cetrain.isu.edu/itf](http://cetrain.isu.edu/itf)

(208) 282-3372



## The Inside Track to Journeyman

An apprenticeship education is a combination of on-the-job training and related classroom instruction providing the practical and theoretical aspects of a highly skilled occupation. These four-year programs build concept upon concept, year after year, preparing the student for the journeyman exam required by the State of Idaho. It's an efficient and practical way to build the foundation for an in-demand and satisfying career.



## Flexible Blended Learning Programs

The electrical, plumbing, and HVAC apprenticeship programs participate in the new blended curriculum at ISU Continuing Education Workforce Training (CEWT).

Blended classes are a combination of traditional instructor-led classes and online self-directed coursework. Blended classes give continuous access to assignments, allowing for more mobility and flexibility during the on-the-job training portion of the apprenticeship. For example, in addition to the blended classwork, the lectures are also streamed live so that students who cannot make it to classroom sessions can still participate in the live lecture. All coursework for the blended classes will be offered online on the Moodle platform, making it easy for students to track their progress.

College credits are available when all program criteria are met. Contact us to learn more!

# Earn as You Learn.

## Apprenticeship Programs in Electrical, Plumbing and HVAC

Apprentices in our four-year programs learn to build real-world, career-defining skills through **on the job training**— while earning wages, college credits, and the know-how to become licensed a journeyman.

**Don't just dream about your future... Make it!**

### FOR MORE INFORMATION

Program Coordinator: **Paul M. Dickey**  
208-282-1077 • [cetrain@isu.edu](mailto:cetrain@isu.edu)

### TO ENROLL

[cetrain.isu.edu/apprentice](http://cetrain.isu.edu/apprentice)  
or call 208-282-3372



**Idaho State University**

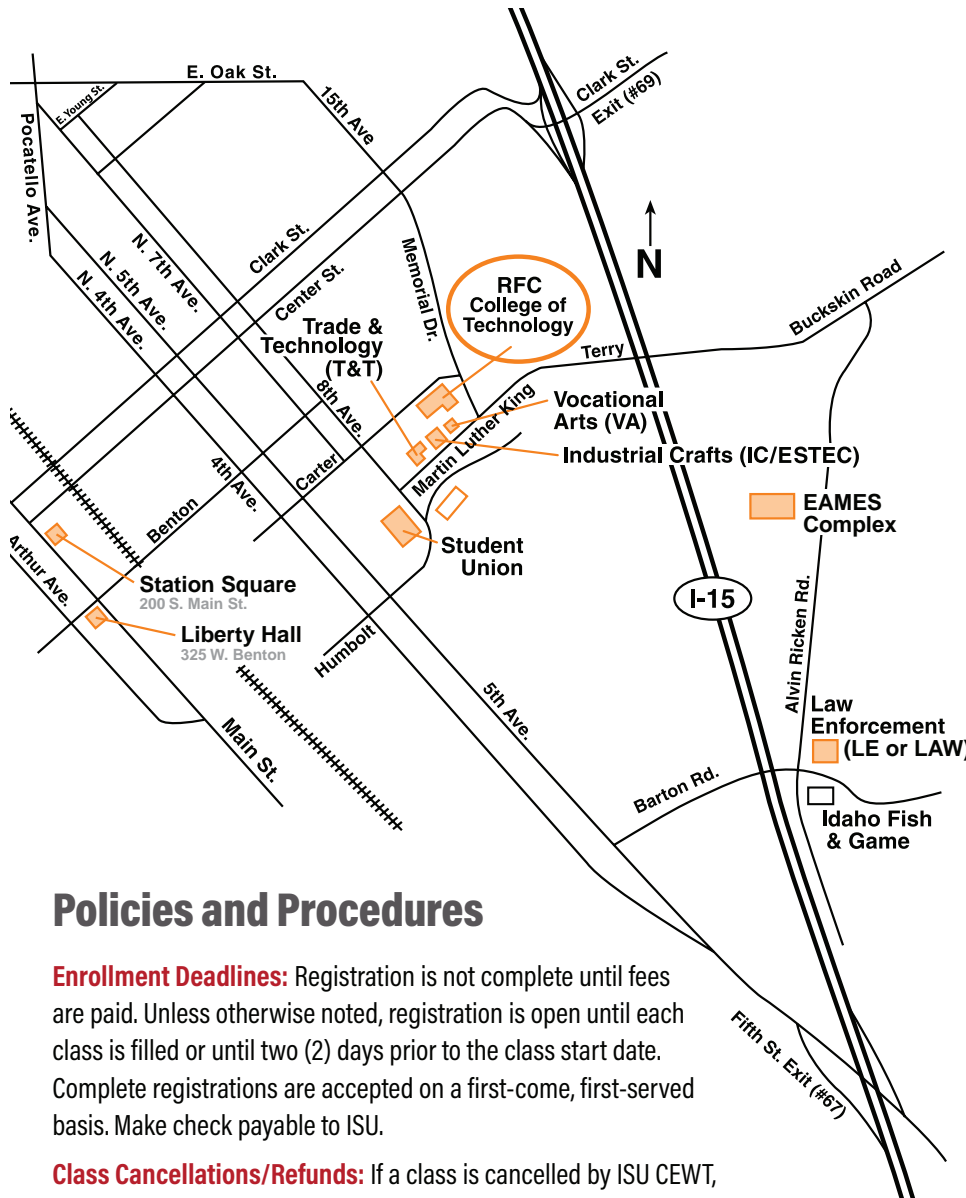
Continuing Education  
and Workforce Training





**All students must be 18+ unless otherwise noted.**

# Registration Information



## 3 Easy Ways to Sign Up for Classes

**ONLINE:** [cetrain.isu.edu](http://cetrain.isu.edu) Go online, create a profile, register and pay online with your Visa or MC.

**BY PHONE:** (208) 282-3372 Phone-in registration will be accepted using Visa or MasterCard. Call (208) 282-3372 any weekday from 8 a.m. to 5 p.m. We will take your information over the phone, mail you an invoice or take your credit card information, and upon receipt of payment, you will be officially registered for class(es).

**IN PERSON:** Come to the CEWT office located in the **Roy F. Christensen (RFC) Building (#48), Suite 184** (777 Memorial Drive), in Pocatello and have one of our customer service associates help you with the process. Payment can be made with cash, check, credit card (Visa or MC), or a signed Purchase Order.



**Idaho State University**

Continuing Education and Workforce Training

## Policies and Procedures

**Enrollment Deadlines:** Registration is not complete until fees are paid. Unless otherwise noted, registration is open until each class is filled or until two (2) days prior to the class start date. Complete registrations are accepted on a first-come, first-served basis. Make check payable to ISU.

**Class Cancellations/Refunds:** If a class is cancelled by ISU CEWT, a full refund will be issued. If a class is dropped by a student, it must be done at least two days prior to the class start date to receive a full refund less a \$15 processing fee. If a two-day notice is not given, no refund will be issued.

**Snow Policies and School Closures:** If the university is closed during the day because of bad weather or some other emergency, our night classes are also cancelled. We will make every attempt to reschedule classes for students. In the event that ISU is not closed and the weather is inclement, use your best judgement. If in doubt, call 208-282-3372.

**AA/EOC:** Idaho State University subscribes to the principles and laws of the State of Idaho and the federal government, including applicable executive orders pertaining to civil rights. All rights,

privileges, and activities of the University are made available without regard to race, creed, color, sex, age, disability, national origin or veteran status. The University is an Equal Opportunity and Affirmative Action employer. Evidence of practices that are not consistent with such a policy should be reported to the Director of the Affirmative Action Office, located in the Museum Building, Room 422 or call 208- 282-3964.

**ADA:** Students having questions about accessibility or requesting reasonable accommodations as indicated in the Americans with Disabilities Act (ADA) or Section 504, should contact the Director of Disability Services, located in Rendezvous Bldg., Room 125 or call 208-282-3599.





# APPRENTICESHIP PROGRAMS

REGISTRATION OPEN JULY 1  
CETRAIN.ISU.EDU/APPRENTICE

**ISU Is Excited To Be The Location Host For  
The Pacific Northwest OSHA Education Center's  
Summer 2024 OSHA Classes.**

**Summer 2024**

OSHA #7500 Introduction to Health and Safety Management (5.5 hrs)

August 13, 2024 | Tuesday

8am-4pm

Cost: To support OSHA's Safe and Sound Week, this course is being offered at no cost.

Prerequisites: None



**Registration is Open!**

For More information: [cetrain.isu.edu/nw-osh/](https://cetrain.isu.edu/nw-osh/) or call 208-282-3372

